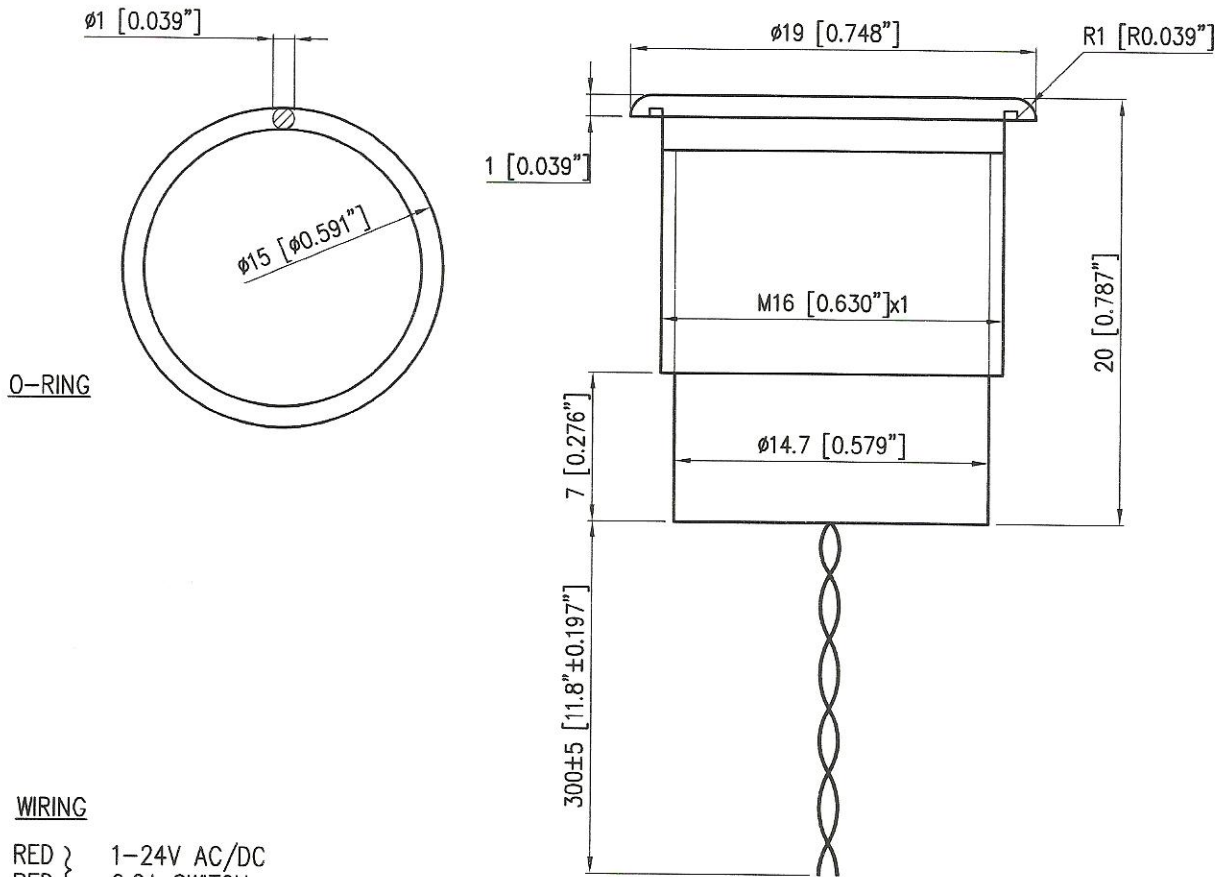
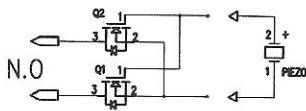


Rev.No	Revision note	Date	Signature	Checked



WIRING

RED } 1-24V AC/DC
 RED } 0.2A SWITCH

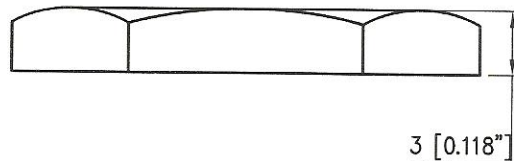
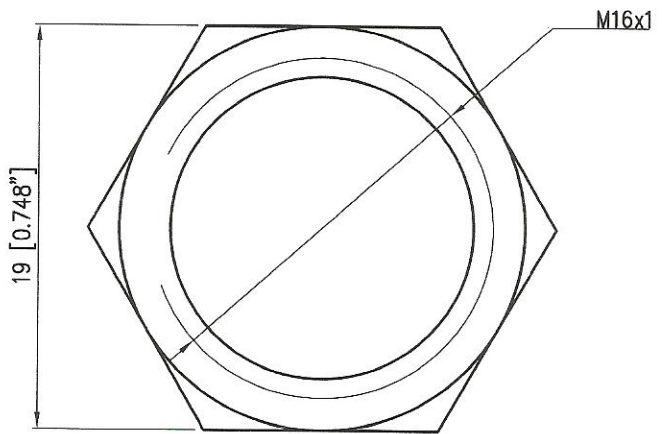


1. SPECIFICATIONS:

ALUMINIUM 6061 T651
 CONNECTION: PVC WIRES 24 AWG
 SWITCHING VOLTAGE: 1 - 24V AC/DC
 SWITCHING CURRENT: 0.200 A
 SWITCH RESISTANCE "ON": <math>< 20</math> OHMS
 SWITCH RESISTANCE "OFF": >5 MOHMS
 ACTUATION FORCE: 2-4 N
 MAKE IMPULSE TIME: 125-300 mSEC
 OPERATING AND STORAGE TEMP: -40°C TO +125°C

2. FINISH:

ANODIZE THICKNESS : 10-12 μ
 ANODIZE COLOR BLUE



	ALUMINIUM 6061 T651	Tolerance ± 0.1	Inna Hatkevich		
Itemref	Quantity	Title/Name, designation, material, dimension etc	Article No./Reference		
Semion	2006.03.07 09:33:40 +02'00'	Inna	2006.03.07 09:20:24 +02'00'	Filename 19020341_901-346	Drawing_n 901-346
Baran House 8 Omarim St. Omer industrial area 84965 Israel Tel. 972-8-6200020 Fax. 972-8-6200021		CSMF6AAW1L ROF WIRES, BLUE		Scale 3:1	Draw Date 26.02.2006
Cat num: 19020341			Edition 1	Sheet 1/1	