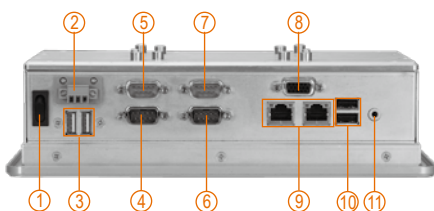


GOT3846T-832

8.4" SVGA TFT Fanless Touch Panel Computer with
Intel® Atom™ Processor (-20°C ~ +55°C)



- | | |
|---------------------------|----------------------|
| 1. Power switch | 6. COM 2 (RS-232) |
| 2. DC power input | 7. COM 4 (RS-232) |
| 3. USB 2.0 x 2 | 8. VGA |
| 4. COM 1 (RS-232) | 9. Ethernet x 2 |
| 5. COM 3 (RS-232/422/485) | 10. USB 2.0 x 2 |
| | 11. Audio (Line-out) |

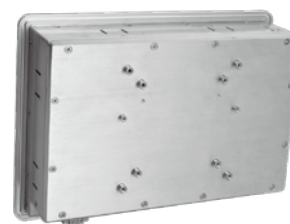
Features



- 8.4" SVGA (800 x 600) color TFT LCD display
- Intel® Atom™ processor N2600 1.6 GHz
- Supports wide temperature range of -20°C ~ +55°C
- Aluminum front bezel & chassis
- Supports WLAN module & external antenna
- Supports 4 USB 2.0 & 4 COM ports
- Supports panel mount, wall mount, VESA arm, desktop stand



Side view



Rear view

Introduction

The GOT3846T-832 is the 8.4" fanless touch panel computer. By supporting a wide temperature range from -20°C to +55°C, it is especially designed for harsh environments. The GOT3846T-832 adopts a modern, super sleek fanless design, is equipped with a 8.4" TFT LCD, and low power consumption Intel® processor. In response to customer's requests for wireless applications, the GOT3846T-832 has a Mini card slot and an optional fixed rotational WLAN antenna for wireless network connection. By just plugging in the Mini card WLAN card, customers have instant access wireless LAN. The GOT3846T-832 is used extensively for variety of industry needs including transportation, packing field surveillance, building automation, and more.

Wide-temperature (-20°C ~ +55°C) supported

The GOT3846T-832 adopts unique extended temperature technology, with a

temperature range from -20°C to +55°C, with a fanless cooling system and compact design for harsh environments.

WLAN antenna supported (optional)

The GOT3846T-832 provides a Mini card slot and an optional fixed rotational WLAN antenna for wireless network connections. By simply plugging in the wireless LAN card, customers can use the unit in a wireless environment.

Anti-vibration up to 1G

With a special vibration-resistant design patent, GOT3846T-832 can work well under 1G (5-500Hz) in operation mode, and equipped with a 2.5" HDD.

Specifications

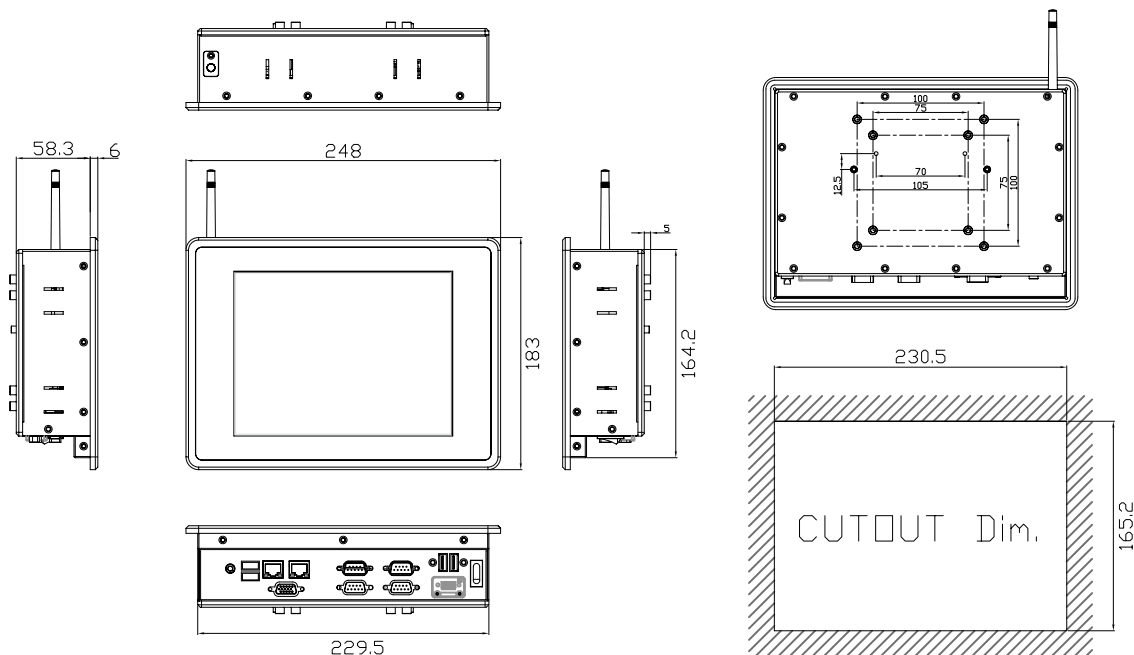
| | | |
|-------------|--|-------------------|
| Front Bezel | IP65, NEMA 4 rugged protection, aluminum front bezel | |
| LCD Panel | Display Type | 8.4" SVGA TFT LCD |
| | Brightness (cd/m ²) | 450 nits |
| | Resolution | 800 x 600 |
| | View Angle (H/V) | 160° / 140° |

| | | |
|-------------|---------------|--|
| Main System | CPU | Intel® Atom™ processor N2600 1.6 GHz |
| | Chipset | Intel® NM10 Express |
| | System Memory | 1 x 204-pin DDR3 800 SO-DIMM max. up to 2 GB |

| | |
|---------------------|---|
| BIOS | AMI 8 Mbit with RPL/PXE LAN boot Rom |
| Storage | 1 x 2.5" SATA HDD 1 x CompactFlash™ |
| Watchdog Timer | 255 levels, 0-255 sec. |
| Onboard Graphics | Integrated Intel® GFX |
| I/O Connector | 3 x RS-232 (COM 2/3/4) 1 x RS-232/422/485 (COM 1) 1 x VGA 1 x Audio (Line-out) 4 x USB 2.0 2 x 10/100/1000Mbps Ethernet |
| Expansion Interface | 1 x PCIe Mini Card |
| Touchscreen | Resistive type |
| Power Supply | 10-30V _{DC} (phoenix type) |
| Dimensions | 248 mm (9.76") x 58.3 mm (2.29") x 183 mm (7.2") |
| Packing Dimensions | 390 mm (15.35") x 190 mm (7.48") x 430 mm (16.92") |
| Weight (net/gross) | 3.4 kg (7.49 lb)/5.8 kg (12.78 lb) |
| Environment | Operating temperature: -20°C - +55°C (-4° - 131°F) (with W.T. DRAM/HDD/CF) Relative humidity: 10% - 95% @ 40°C; non-condensing Operation vibration: 1G, 5-500Hz, random for 2.5" HDD 2G, 5-500Hz, random for CompactFlash™ |
| Certification | CE |

* W.T.: Wide Temperature. All W.T. supported products have to be sorted by Axiomtek.

Dimensions



Ordering Information

| | |
|--------------|--|
| GOT3846T-832 | 8.4" SVGA TFT fanless touch panel computer with Intel® Atom™ N2600 (-20°C - +55°C) |
|--------------|--|

* Specification and certifications are based on options and may vary.

Optional EOS Installation

| |
|------------------------------|
| Windows® Embedded Standard |
| Windows® Embedded Standard 7 |
| Linux kernel 2.6 |

Optional OS Installation

| |
|------------|
| Windows® 7 |
|------------|

Overview

Industrial Panel Computers & Monitors

Heavy-duty Fanless Touch Panel Computers

Digital Signage Solutions

Healthcare & Medical Solutions

Open Frame Panel Computers

Accessories