

VB Series

VIA VB8003

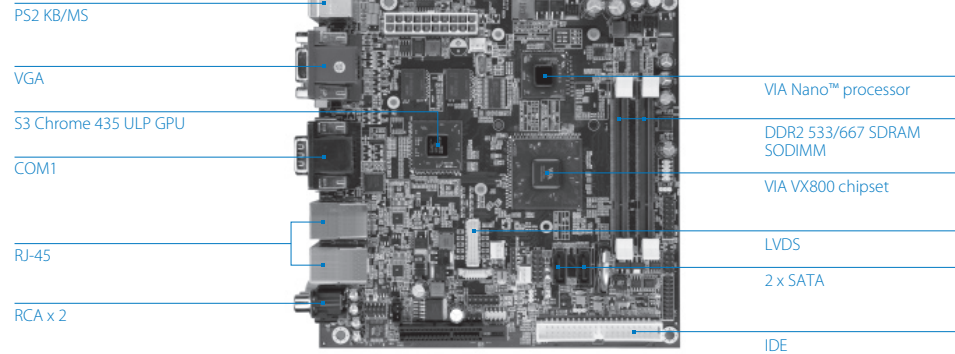
Mini-ITX Nano™ Board with
4 Display Outputs, HDMI®,
DVI, CF, Dual GigaLAN
Support

Features

- Onboard S3 Chrome 435 ULP. Supports DX10.1 / OpenGL 3.1 and ChromotionHD™ multimedia video engine, enabling hardware acceleration for H.264, VC-1, MPEG-2, WMV-HD, and AVS
- Supports 4 display outputs including HDMI, DVI, & CRT
- Supports DDR2 533/667 SDRAM
- Supports two Gigabit Ethernet
- Supports one IDE and two SATA hard drives
- Supports Compact Flash type II
- Supports six USB 2.0 ports
- Supports two COM ports
- Supports HD audio



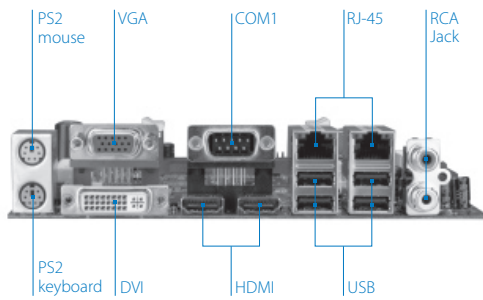
Board Placement



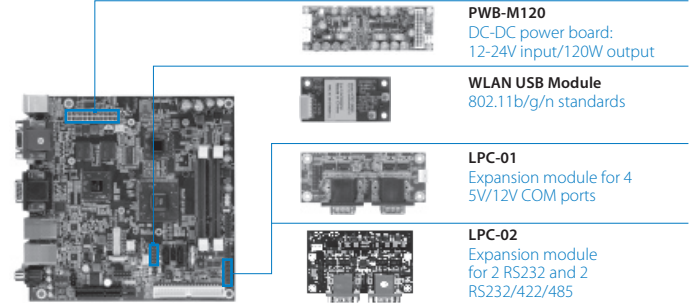
Specifications

Model Name	VB8003-16
Processor	1.6GHz VIA Nano™ with FSB 800MHz
Chipset	VIA VX800 Unified Digital Media IGP chipset
System Memory	2 x DDR2 533/667 SDRAM SODIMM sockets. Up to 4GB memory size
Graphic	S3 Chrome 435 ULP through PCIe x 4. Supports DX 10.1 / OpenGL 3.1 and ChromotionHD™ multimedia video engine, enabling hardware acceleration for H.264, VC-1, MPEG-2, WMV-HD, and AVS GDDR3 256MB 32x32 x 2 4 displays support by S3+VX800: <ul style="list-style-type: none"> • 1 x HDMI (S3) • 1 x DVI-I (S3) (default display) • 1 x HDMI • 1 x VGA (VX800)
Storage	1 x PATA (40-pin with power), supports HDD/SSD/DOM 1 x CF type II 2 x SATA (supports power for DOM)
Onboard LAN	2 x VIA VT6130 Gigabit Ethernet controller
Onboard Audio	1 x VIA VT1708B High Definition Audio Codec
Onboard Super I/O	1 x VIA VT1211 LPC Super I/O
Onboard I/O Connectors	3 x fan connectors: CPU/Sys/GPU FAN 1 x USB pin connectors for 2 additional USB 2.0 ports (supports VIA VT6656 WLAN module) 1 x Serial port pin connector for COM2 (5V/12V selectable) 1 x VCP slot for video capture function or 2 COM ports with 5V/12V support (add-on card is required) 1 x PS2 keyboard/mouse pin connector 1 x DIO pin connector (GPI x 4 + GPO x 4) 1 x LPC header 1 x FIR pin connector (IRDA 1.0) 1 x SMBus connector 1 x System temperature reading pin connector 1 x Front panel pin connector (2 pin for WLAN LED) 1 x Front panel audio pin connector (Mic-in and Line-out) 1 x SPDIF pin connector 1 x MFX pin connector for VIA MFX module 1 x 24-bit dual channel LVDS connector (optional with HDMI by VX800) 1 x Backlight control connector for inverter power and brightness control 1 x ATX power connector
Back Panel I/O	1 x PS2 mouse port 1 x PS2 keyboard port 2 x HDMI ports 1 x Serial port 1 x DVI-I (default display) 1 x VGA port 2 x GigaLAN ports 4 x USB 2.0 ports 2 x RCA jacks

Back Panel I/O



Accessories



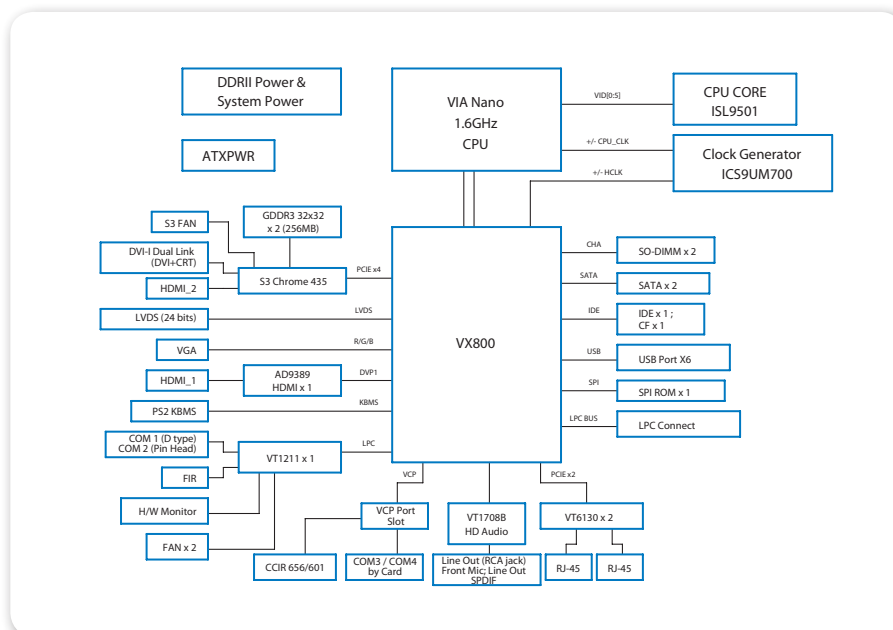
Specifications

Model Name	VB8003-16
BIOS	Award BIOS, SPI 4/8Mbit flash memory
Operating System	Windows XP, Windows Embedded Standard, Linux
System Monitoring & Management	CPU/System voltage monitoring System temperature monitoring Fan speed monitoring Watch Dog Timer Wake-on LAN, Keyboard Power-on, Timer Power-on AC power failure recovery
Operating Temperature	0 ~ 60 °C
Operating Humidity	0% ~ 95% (relative humidity; non-condensing)
Form Factor	17 cm x 17 cm

Ordering Information

Model Name	CPU Frequency	Description
VB8003-16	1.6GHz Nano™	Mini-ITX Board with 1.6GHz Nano™, up to 4 Display Outputs Supporting HDMI, DVI, CRT, USB, COM, CF, IDE, SATA, GigaLAN

Block Diagram



Packing List

Items
1 x Box content card
1 x SATA cable
1 x I/O bracket
1 x Driver CD
1 x Screw accessory pack for DVI