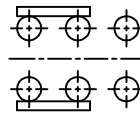
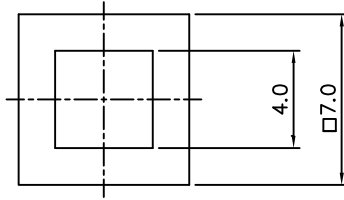
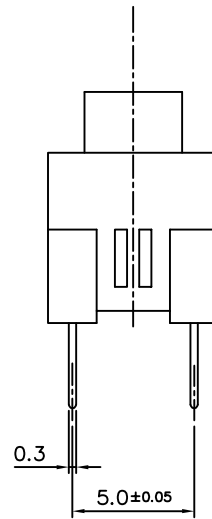
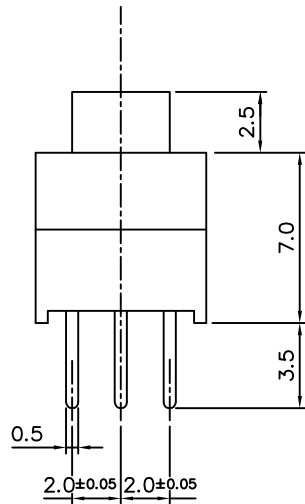
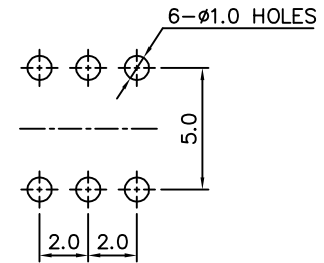


CIRCUIT DIAGRAM



PCB DIMENSION



NOTE

1. RATING : DC 30V 0.1A
2. CIRCUIT : 2C - 2P
3. TIMING : NON SHORTING
4. OPERATING FORCE : 200g±50gf
5. STROKE : FULL : 1.8
LOCK : 1.0
6. OPERATING MODE : SELF LOCK
7. GENERAL TOLERANCE : ±0.3
8. MANUFACTURING SPECIFICATION WOULD BE IN ACCORDANCE WITH HP0101

PART NO	PART NAME	Q'TY	MATERIAL	STANDARD	DISPOSITION	REMARKS
△			TRIGON-OMETRY	UNIT	SCALE	PUSH SWITCH
△				4	1	
△			APPD	CHKD	DSGD	MODEL INP-2212BNA
△						
△						
NO	CORRECTION					