

Data Sheet

LL12ED-BG40L06



Xlamp MX-6



■ Features & Typical Applications

- High efficiency
- Available with 1 beam angle
- Optimized for uniform effect
- Lens without Housing
- Commercial Lighting
- Architectural Lighting

■ Table of Contents

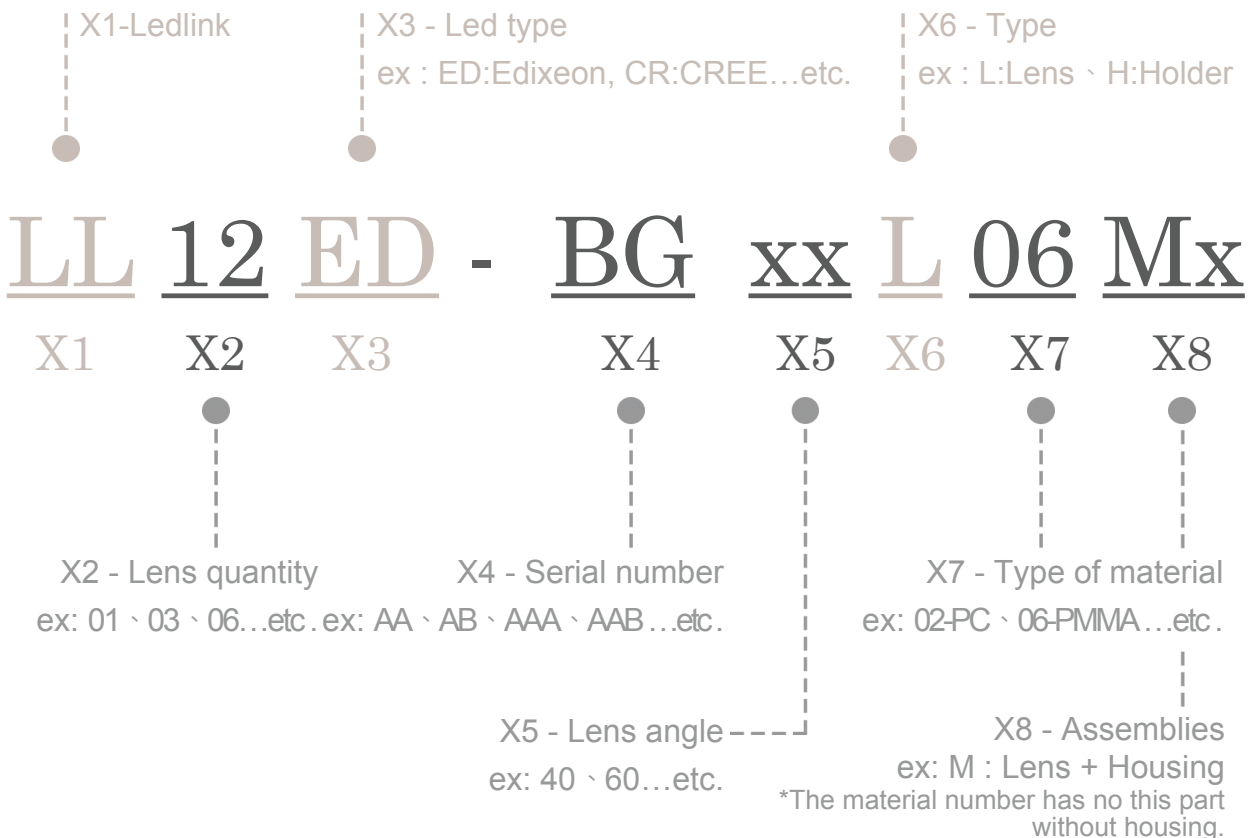
| | |
|---|-----|
| General Information & Product Nomenclature..... | P.2 |
| Optical Specifications | P.3 |
| Mechanical Specifications | P.4 |
| Package Specifications | P.5 |

LL12ED-BGxxL06

General Information

- Lens Material Optical Grade PMMA
- Operating Temperature range -40°C~+70°C(upper limit +80°C)
- Storage Temperature range -40°C~+70°C(upper limit +80°C)
 - * Average transmittance in visible spectrum 400nm~700nm>90%
- Usage and Maintenance:
 1. If necessary, clean lenses with mild soap, water and soft cloth.
 2. Never use any commercial cleaning solvents on lenses, like alcohol.
 3. Please handle or install lenses with wearing gloves, skin oils may damage lens or its optical characteristic.

Product Nomenclature




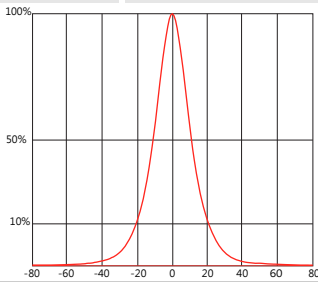
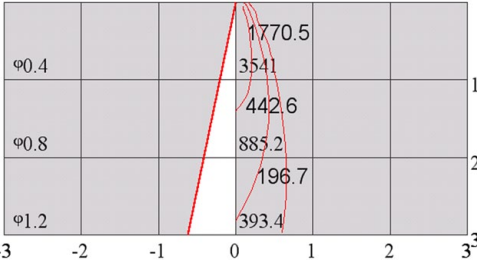
LL12ED-BGxxL06

Optical Specifications



Xlamp MX-6

Note: (1) All the results of analysis are based on 0 degrees of elevation.
 (2) Tolerance: $\pm 10\%$.
 (3) Led Luminous Flux(lm): 78($\pm 5\%$).

| Part Number | FWHM | Field Angle* | cd / lm | IES File |
|---|---|--------------|--|--------------------------|
| LL12ED-BG40L06 | 22° | 49° | 3.8 | Download |
|  |  | |  | |
| Beam Pattern | Light Distribution Curve | | Illuminance Distribution | |

*Current series also come with BG25. However, the performance with the LED is not satisfied hence it will not demonstrate here.

*The Field Angle is the angle between the two directions opposed to each other over the beam axis for which the luminous intensity is 10% that of the maximum luminous intensity.

*This testing result is obtained through testing the popular rank LED samples which provided by the original manufacturer. Hence, the testing results would be varied as the users choose same LED model but different rank.

LL12ED-BGxxL06

Mechanical Specification

1. Fixing method

 Glue

 Screw

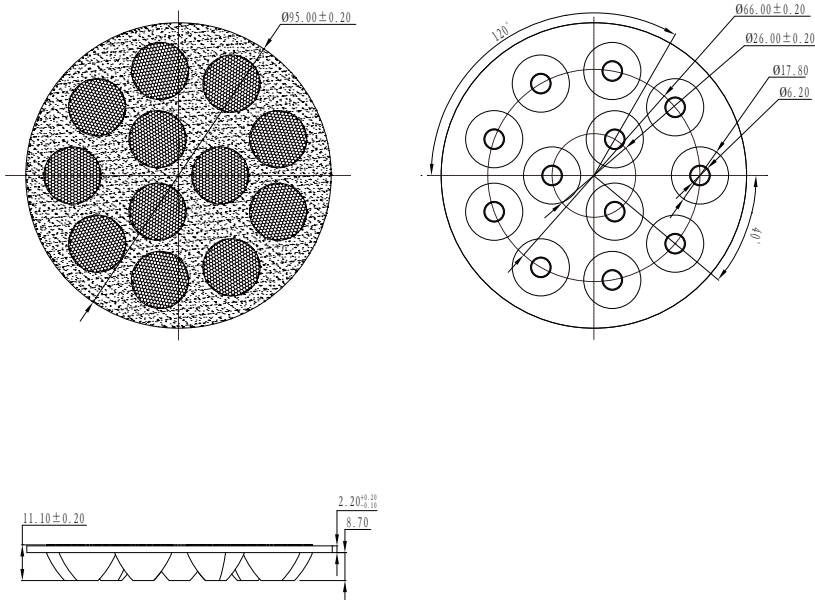
 Tape

 Fixing-ring

 Frame

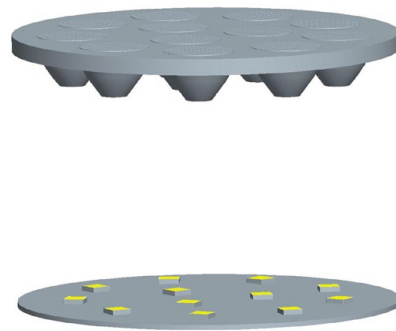
Note: (1) All dimensions are in mm.
 (2) All measurements are ± 0.15 mm unless otherwise indicated.

2. Lens dimensions

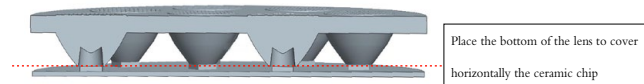


4. Lens assembly dimensions

3. Lens + Leds + MCPCB assembly instruction



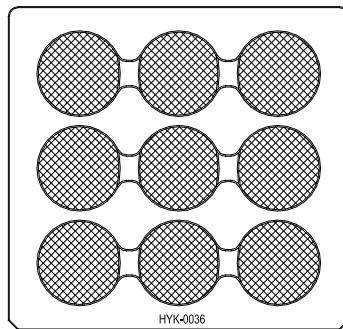
5. View assembly lens with MCPCB:



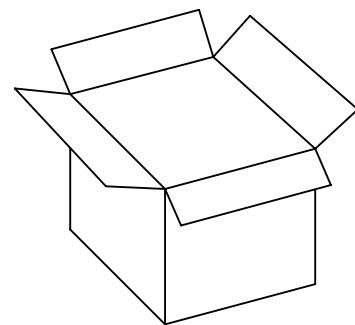
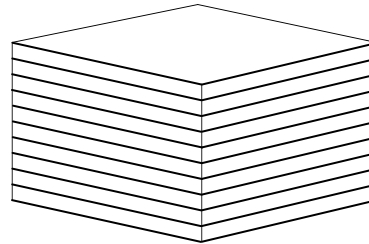
LL12ED-BGxxL06

Package Specifications

| Item | Quantity | Total | Size(L*W*H) | G.W |
|-------------|-------------------------|---------|------------------|-------|
| Plastic box | 18 pcs/plastic box | 18 pcs | 38.2*36.2*2.5 cm | 36.0g |
| Outer box | 6 plastic box/Outer box | 108 pcs | 40*37*21 cm | |



18 pcs/plastic box



108 pcs/Outer box



Note: