

CoolLED

Efficient
Innovative
Control

DALI Dimmable LED Drivers

350mA to 1400mA

CoolLED drivers provide a high performance solution for powering high-brightness LEDs from a mains supply.

The DALI controlled driver provides a digital alternative to standard 1-10V dimmable drivers and offers these key benefits:

Full Dimming Capabilities

Full DALI dimming support from 100% to 10% output current (5% at 700mA) and the ability to turn completely off.

Individual and Group Control

Ability to control individual LED luminaires and simultaneous control of all or specified groups.

Regulated Output Current

A driver will typically power between 5 and 14 LEDs with a 1W to 3W rating up to a combined forward voltage of 48V (dependant on current).

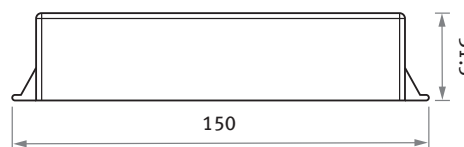
High Efficiency and Long Life

High Efficiency design ensures cool operation and long life. There is an extra benefit of a very low off power.

Compact Enclosure and Fast Assembly

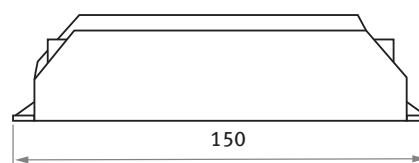
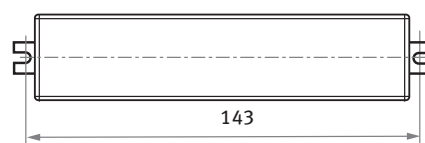
Available in Flying Lead (A), Integral (B) and Remote Mount (C) versions. remote types feature screwless cable clamps.

- DALI control standard EN60929
- Fully-isolated, SELV output delivering up to 30W of power
- Power factor corrected (0.96)
- Isolated DALI interface
- Constant current output
- Self resetting thermal trip
- Double insulated (Class II)
- Up to 85% efficient
- LED string fault reporting
- Integral and remote versions
- Made in the UK
- Low 'off' power (<0.3W)
- Available currents 350mA, 500mA, 700mA, 1000mA, 1200mA, 1400mA

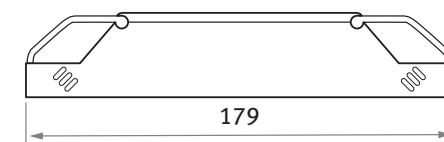
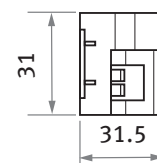
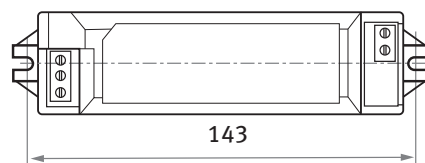


Flying Lead
'A' type

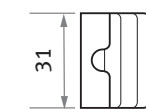
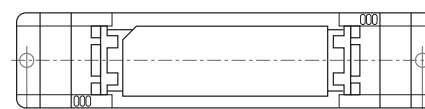
AV 350mm



Integral
'B' type



Remote
'C' type



Technical Specification

Specification / Model	CL350D-240-A/B/C	CL500D-240-A/B/C	CL700D-240-A/B/C	CL1000D-240-A/B/C	CL1200D-240-A/B/C	CL1400D-240-A/B/C
Mains input voltage range	220 to 240V ac rms					
Mains frequency	47 to 63Hz					
Power factor at full load	>0.95 (0.96 typical)					
Efficiency at full load	85% typical					
Mains surge protection	4kV common-mode 2kV differential					
Input-output isolation	3.75kV ac rms					
Ambient temperature range	-25°C to 50°C					
Maximum Tc temperature	80°C					
Humidity	95% max non-condensing					
Full output current	350mA (+/-5%)	500mA (+/-5%)	700mA (+/-5%)	1000mA (+/-5%)	1200mA (+/-5%)	1400mA (+/-5%)
Dimming range (output)	Off, 10%-100%	Off, 10%-100%	Off, 5%-100% 700mA	Off, 10%-100%	Off, 10%-100%	Off, 10%-100%
Input power when output is off	<0.3W					
LED string voltage	15V to 48V	15V to 48V	(43V @ 700mA)	15V to 30V	15V to 21V	15V to 18V
Typical no. of LEDs (1-3W)	5 to 14 in series	5 to 14 in series	5 to 13 in series	5 to 9 in series	5 to 7 in series	5 to 6 in series
Enclosure	White polycarbonate UL94-V0 rated					
Dimensions	See diagrams for A, B and C types					
Terminal blocks	Rising clamp 10mm input pitch, 5mm output pitch					
Wire size	0.5 to 1.5mm ²					
Weight	120g					
Compliance	EN61347-2-13 EN61000-3-3 EN61547 EN62384 EN55015:2006 +A1:2007 DALI Standard EN60929					

DALI Support

