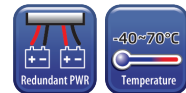


IES-A1080/A1062 Series

➔ Industrial C1D2/ATEX 8-port unmanaged Ethernet switch

Features

- C1D2 and ATEX compliant for harsh industrial environments application
- IES-A1080 provide 8x10/100Base-T(X) ports
- IES-A1062GT provide 6x10/100Base-T(X) and 2x10/100/1000Base-T(X) ports
- IES-A1062FX series provide 6x10/100Base-T(X) and 2x100Base-FX fiber ports
- IES-A1062GF series provide 6x10/100Base-T(X) and 2x1000Base-X fiber ports
- Triple redundant DC power inputs of terminal block and power jack
- Support auto-negotiation and auto-MDI/MDI-X
- Support store and forward transmission
- Support flow control
- Rigid IP-30 aluminum housing design
- DIN-Rail and wall mounting enabled

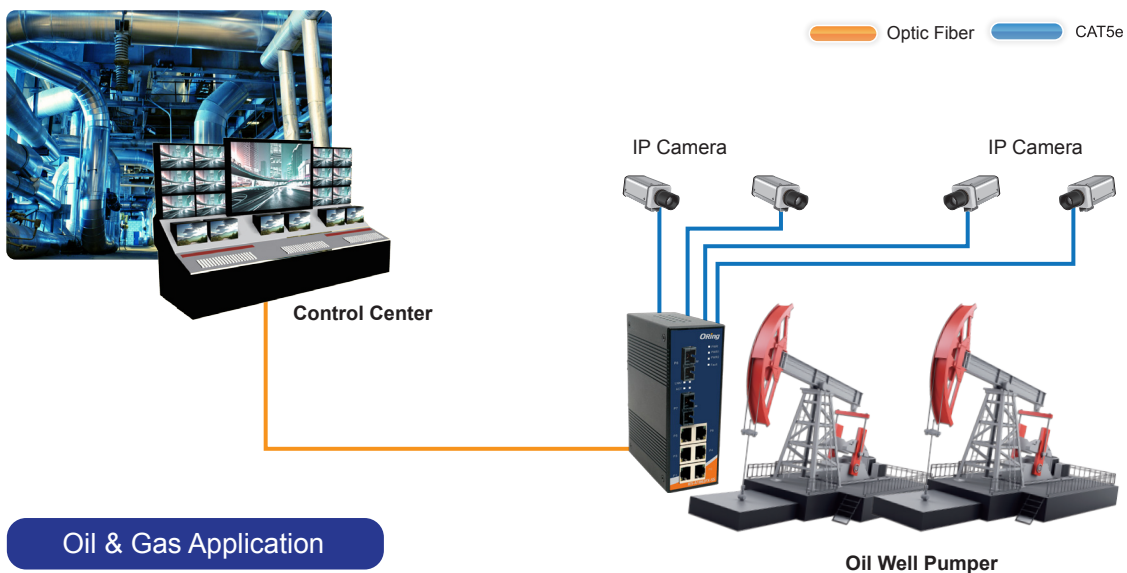


Introduction

IES-A1080/A1062 series are unmanaged Ethernet switches with 6x10/100Base-T(X) and 2x100Base-FX, 10/100/1000Base-T(X), 1000Base-SX or 1000Base-LX ports which is specifically designed for the C1D2/ATEX certified with hazardous locations requirement. IES-A1080/A1062 series support redundant power input and surge protection. The wide operating temperature range from -40 to 70°C and C1D2/ATEX certified can satisfy most of harsh or hazardous locations operating environments.

Practical Operation

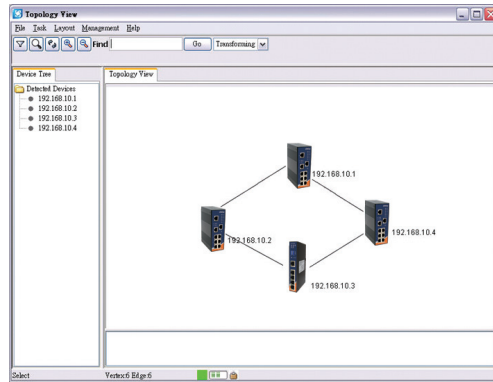
IES-A1080/A1062 series can be used in connecting several Ethernet devices like Ethernet I/O, IP-Camera or other Ethernet switches. In addition, there are three different power inputs to enhance its reliability, two supplied by terminal block, and one by power jack to avoid interruption caused by power down. When the primary DC power input fails, the backup power input will take over immediately to guarantee a non-stop operation.



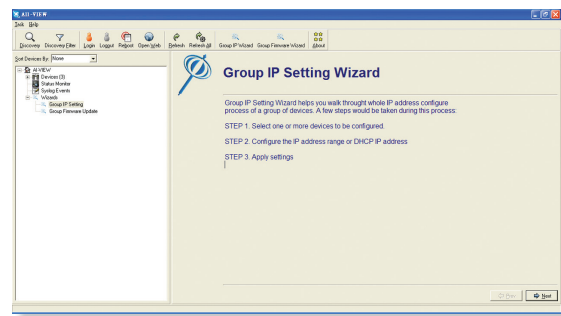
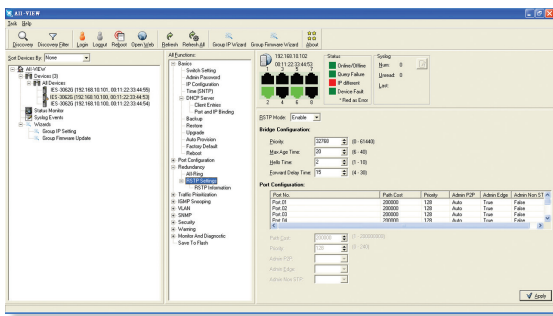
Connections of Ethernet devices

Open-Vision

ORing's switches are intelligent switches. Different from other traditional redundant switches, ORing provides a set of Windows utility (**Open-Vision**) for user to manage and monitor all of industrial Ethernet switches on the industrial network.

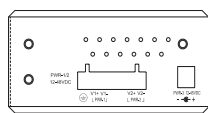
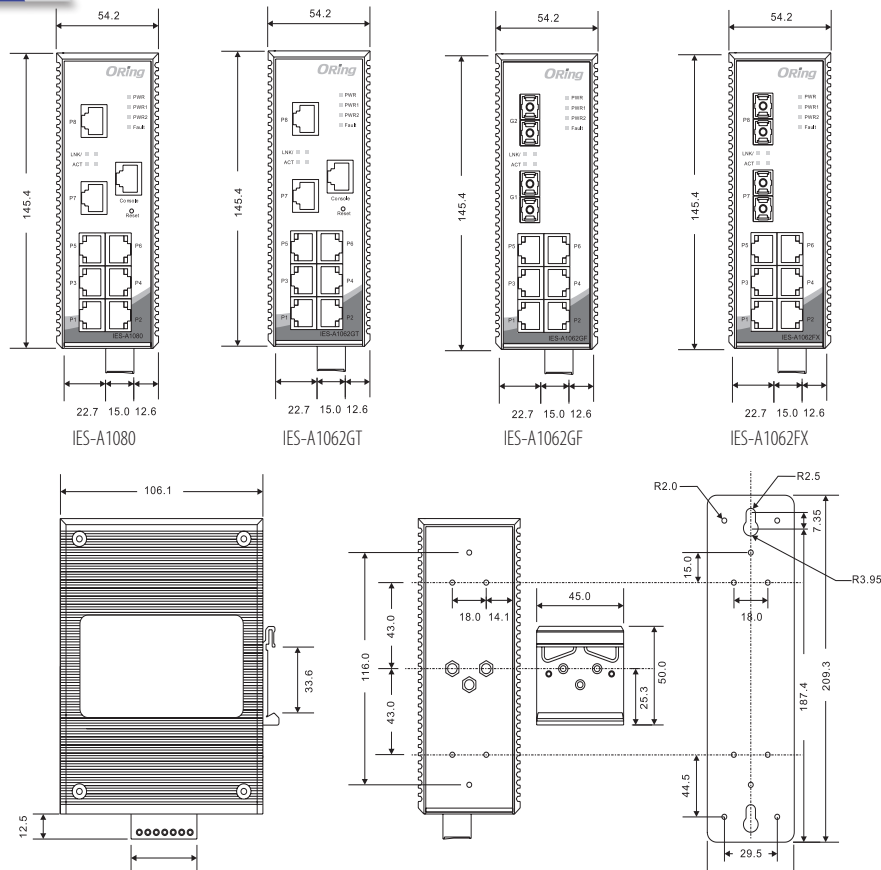


Topology View



Monitoring and Configuration interface

Dimensions



(Unit=mm)

Specifications

ORing Switch Model		IES-A1080	IES-A1062GT	IES-A1062FX-MM-SC	IES-A1062FX-SS-SC	IES-A1062GF-MM-SC	IES-1062GF-SS-SC
Physical Ports							
10/100Base-T(X) Ports in RJ45 Auto MDI/MDIX		8	6	6	6	6	6
10/100/1000Base-T(X) Ports in RJ45 Auto MDI/MDIX		-	2	-	-	-	-
Fiber Ports Specifications	Fiber Ports Number	-	-	2	2	2	2
	Fiber Ports Standard	-	-	100Base-FX	100Base-FX	1000Base-SX	1000Base-LX
	Fiber Mode	-	-	Multi-mode	Single-mode	Multi-mode	Single-mode
	Fiber Diameter (µm)	-	-	62.5/125 µm 50/125 µm	9/125 µm	62.5/125 µm 50/125 µm	9/125 µm
	Fiber Optical Connector	-	-	SC	SC	SC	SC
	Typical Distance (km)	-	-	2 km	30 km	0.55 km	10 km
	Wavelength (nm)	-	-	1310 nm	1310 nm	850 nm	1310 nm
	Max. Output Optical Power (dBm)	-	-	-14 dBm	-8 dBm	-4 dBm	-3 dBm
	Min. Output Optical Power (dBm)	-	-	-23.5 dBm	-15 dBm	-9.5 dBm	-9.5 dBm
	Max. Input Optical Power (Saturation)	-	-	0 dBm	0 dBm	0 dBm	-3 dBm
	Min. Input Optical Power (Sensitivity)	-	-	-31 dBm	-34 dBm	-18 dBm	-20 dBm
	Link Budget (dB)	-	-	7.5 dB	19 dB	8.5 dB	10.5 dB
Technology							
Ethernet Standards	IEEE 802.3 for 10Base-T IEEE 802.3u for 100Base-TX and 100Base-FX IEEE 802.3ab for 1000Base-T IEEE 802.3z for 1000Base-X IEEE 802.3x for Flow control						
MAC Table	8192 MAC addresses						
Processing	Store-and-Forward						
LED Indicators							
Power Indicator	Green : Power LED x 3						
Fault Indicator	Amber : Indicates PWR1 or PWR2 failure occurred						
10/100Base-FX RJ45 Port Indicator	Green for port Link/Act. Amber for Duplex/Collision						
10/100/1000Base-T(X) / Fiber Port Indicator	Green for port Link/Act. Amber for Link						
Power							
Redundant Input Power	Triple DC inputs : Dual 12~48VDC on 7-pin terminal block One 12~48VDC on power jack (power jack cannot use in hazardous location application)						
Power Consumption (Typ.)	4 Watts	7 Watts	8 Watts	8 Watts	6 Watts	6 Watts	6 Watts
Overload Current Protection	Present						
Reverse Polarity Protection	Present on terminal block						
Physical Characteristics							
Enclosure	IP-30						
Dimensions (W x D x H)	52(W) x 106.1(D) x 144.3(H) mm (2.05x4.18x5.68 inch.)						
Weight (g)	666 g	677 g	680 g	680 g	685 g	685 g	685 g

Environmental	
Storage Temperature	-40 to 85°C (-40 to 185°F)
Operating Temperature	-40 to 70°C (-40 to 158°F)
Operating Humidity	5% to 95% Non-condensing
Regulatory Approvals	
EMI	FCC Part 15, CISPR (EN55022) class A
EMS	EN61000-4-2 (ESD), EN61000-4-3 (RS), EN61000-4-4 (EFT), EN61000-4-5 (Surge), EN61000-4-6 (CS), EN61000-4-8, EN61000-4-11
Shock	IEC60068-2-27
Free Fall	IEC60068-2-32
Vibration	IEC60068-2-6
Safety	EN60950, UL508 (E331061), UL/cUL Class 1 Division 2 Group A/B/C/D, ATEX Class 1 Zone 2
Warranty	5 years

Ordering Information

IES-A1 **AA** **B** **CC** - **DD** - **EE**

Code Definition	10/100Base-T(X) Port Number	Additional Port Number	Additional Port Type	Fiber Optical Mode	Fiber Optical Connector
Option	- 08 : 8 ports - 06 : 6 ports	- 0 : 0 port - 2 : 2 ports	- GT : 10/100/1000Base-T(X) - FX : 100Base-FX - GF : 1000Base-X	- MM : Multi-mode - SS : Single-mode	- SC : SC connector

Available Model	Model Name	Description
	IES-A1080	Industrial C1D2/ATEX 8-port slim type unmanaged Ethernet switch with 8x10/100Base-T(X)
	IES-A1062GT	Industrial C1D2/ATEX 8-port unmanaged Ethernet switch with 6x10/100Base-T(X) and 2x10/100/1000Base-T(X)
	IES-A1062FX-MM-SC	Industrial C1D2/ATEX 8-port unmanaged Ethernet switch with 6x10/100Base-T(X) and 2x100Base-FX, multi-mode, 2Km/1310nm, SC connector
	IES-A1062FX-SS-SC	Industrial C1D2/ATEX 8-port unmanaged Ethernet switch with 6x10/100Base-T(X) and 2x100Base-FX, single-mode, 30Km/1310nm, SC connector
	IES-A1062GF-MM-SC	Industrial C1D2/ATEX 8-port unmanaged Ethernet switch with 6x10/100Base-T(X) and 2x1000Base-SX, multi-mode, 550m/850nm, SC connector
IES-A1062GF-SS-SC	Industrial C1D2/ATEX 8-port unmanaged Ethernet switch with 6x10/100Base-T(X) and 2x1000Base-LX, single-mode, 10Km/1310nm, SC connector	
Packing List		Optional Accessories
<ul style="list-style-type: none"> IES-A1080 / A1062 series DIN-Rail Kit Wall-mount Kit Quick Installation Guide 		<ul style="list-style-type: none"> DR-45 series, 45W DIN-Rail power supply DR-75 series, 75W DIN-Rail power supply DR-120 series, 120W DIN-Rail power supply PAA-121000, 12VDC/1000mA 12W Power Adapter with universal 100 to 240VAC input, US plug PAE-121000, 12VDC/1000mA 12W Power Adapter with universal 100 to 240VAC input, EU plug